

Chimeric IgA anti Ovalbumin ; cat # A1Tava11



Catalog number: # A1Tova11

Batch number: #270411

Important note: Centrifuge before opening to ensure complete recovery of vial contents. Never freeze in order to prevent IgA precipitation.

Description: monoclonal chimeric IgA₁ (mix of monomeric 50% and polymeric (50%) forms) binds **Albumin from chicken eggs**. Cross reactivity has been checked for albumin from bovine serum, β lactoglobulin from milk and peanut. ovaTA1 Ab has been produced by HAMIGA® Technology and contains humanized heavy chains, mouse light chains, and mouse J chain.

Source: Hybridoma culture of clone $\alpha 1_{\text{ovaTA1}}$.

Format: 100 μ l, liquid, purified by liquid chromatography using Human IgA specific ligand.

Concentration: 1mg/ml.

Purity: >95% pure (Gel Doc analysis on SDS-PAGE gel).

Buffer: Phosphate buffer saline, pH 7.4, Sodium azide 0.01%.

Applications: ELISA, western blot.

Application notes:

-Recommended starting dilution for ELISA and western blotting: 0.1-1 μ g/ml. Each laboratory should determine an optimum working titer and experimental conditions for use in its particular application.

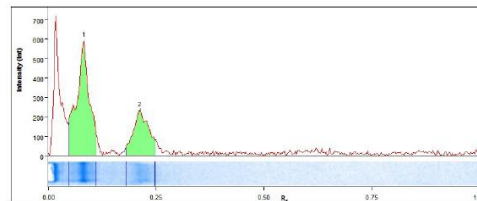
-Recommended hybridation buffer: (i) [PBS/gelatin from pig skin 0.2%], for ELISA ; (ii) [PBS /Tween20 0.05%, BSA 0.3%] for ELISA or western blotting ; (iii) [PBS/Milk 3%] for western blotting.

-Recommended blocking buffer are respectively: (i) [PBS/gelatin from pig skin 2%], (ii) [PBS/Tween20 0.05%/BSA1%] or (iii) [PBS/milk 5%].

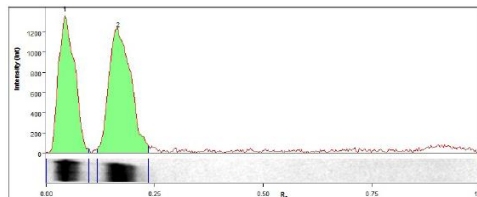
Storage: 4°C - **DO NEVER FREEZE** – 12 months from the date of dispatch

Quality controls performed: SDS Page analysis of ovaTA1 IgA with Coomassie staining **[A]**, Western Blotting **[B]** and reactivity on ovalbumin by western blot **[C]** coupled to Gel Doc analysis and ELISA using decreasing amount of ovaTA1 IgA **[D]**:

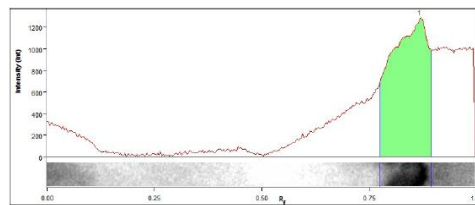
[A]: Coomassie staining on 5-15% acrylamide gel:



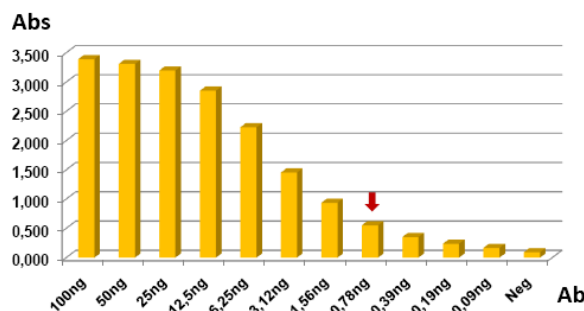
[B]: Western blotting anti human Alpha chain:



[C]: Reactivity of 5 μ g of ovaTA1 Ab on 1 μ g of albumin from chicken egg.



[D]: ovaTA1 reactivity in ELISA on 100ng of albumin from chicken egg ; The threshold reactivity is obtained with 0.8ng of Ab:



Related products: #A1Tova11 monoclonal chimeric IgA₁ anti-albumin from chicken eggs, #A1Tbla11 monoclonal chimeric IgA₁ anti- β lactoglobulin A and B from cow's milk, #A1Tara21 and #A1Tara11 monoclonal chimeric IgA₁ anti peanut,

GentaUR Molecular Products
Voortstraat 49
1910 Kampenhout, Belgium